

A2200 – ALL AROUND 3D PRINTER

Print with traditional FDM Extruder and Paste/Ink Dispenser side-by-side.

Multi-materials printers are at the cutting edge of the industry and the A2200 is the first broadly accessible price point with full features and high precision. The A2200 is the easiest to use multi-materials printer for 3D electronics and can do so much more than competitive systems.

By using conductive inks with an FDM Extruder, the A2200 can 3D print electronic objects as a continuous part requiring little to no assembly. The A2200 lets users fabricate 3D printed devices such as PCB circuits, interconnects, and wiring harnesses.

Print the circuits* with the Paste/Ink Dispenser and the substrate or housing with the traditional FDM Extruder all within one 3D printer at the same time.

Simple, reliable and easy to use, the A2200 is a versatile multi-materials 3D electronics printer with a performance that rivals systems that cost 10x, even 100x more. The 3D printer lowers the barrier for prototyping and small volume production of fully functioning electronic devices for education and even home use. Use it right out of the box. It's cost-effective and a user-friendly 3D electronics printer.

*with 0.8 mm pitch; 250 um min trace width



Print IoT packaging, sensors, antennas, resistors, conductors, and other electrical components. Try different functional pastes and inks to print your sensors



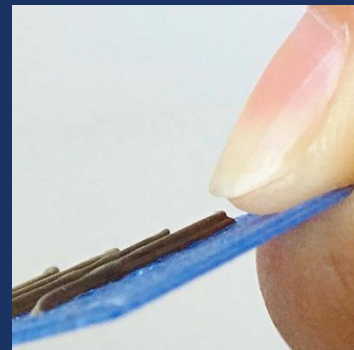
Embedded conductive ink 3D printed within PLA.

Don't add wires, print the wires of your device within the housing of your structure.



LED flashlight with printed wires leading to battery.

Print on various types of substrates such as glass, ceramics, paper, or Kapton. You can even print your own substrate.



3D printed conductive paste

Shop online at www.kteknano.com or contact us at:

sales@kteknano.com | tel: 503-598-9828 | toll-free: 1-800-880-0172